

# MERCURIALL

## Chorus WS-1



User guide  
[www.mercuriall.com](http://www.mercuriall.com)

# Introduction

Chorus WS-1 is a free audio plugin for Mac OS X and Windows in AU, VST and AAX plugin formats.

## Features

- Low CPU Usage;
- Stereo and Mono Modes.

# Minimum system requirements:

## PC

- CPU - Intel or AMD with SSE2 support
- OS - Windows Vista or newer
- DAW - VST 2.4 compatible or Pro Tools 11
- RAM - 2Gb

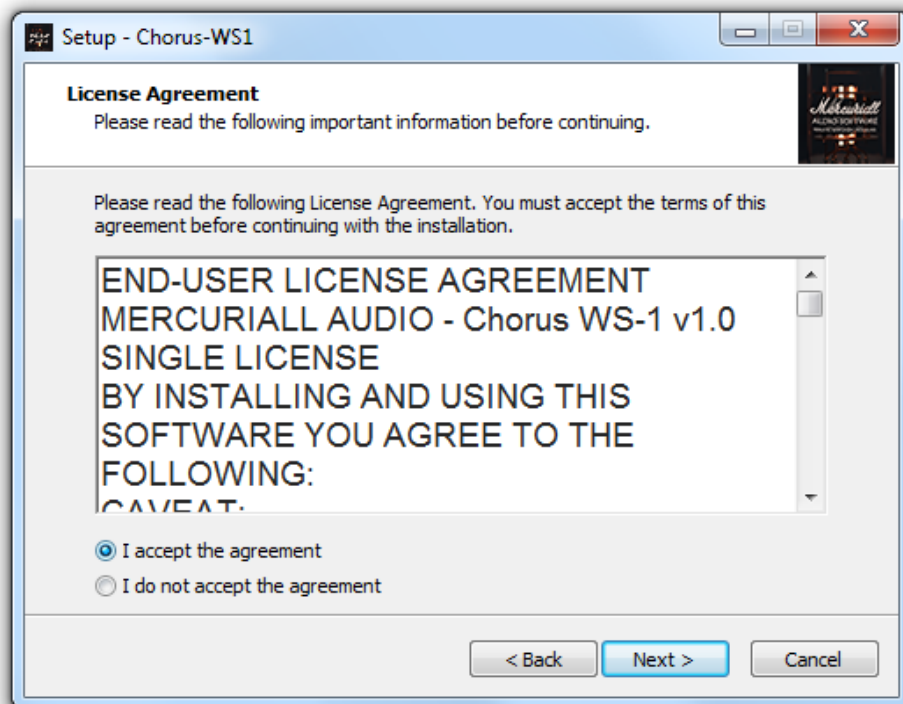
## Mac

- CPU - Intel Core 2 or newer
- OS - OSX10.7 or newer
- DAW - AU or VST 2.4 compatible or AAX64 compatible
- RAM - 2Gb

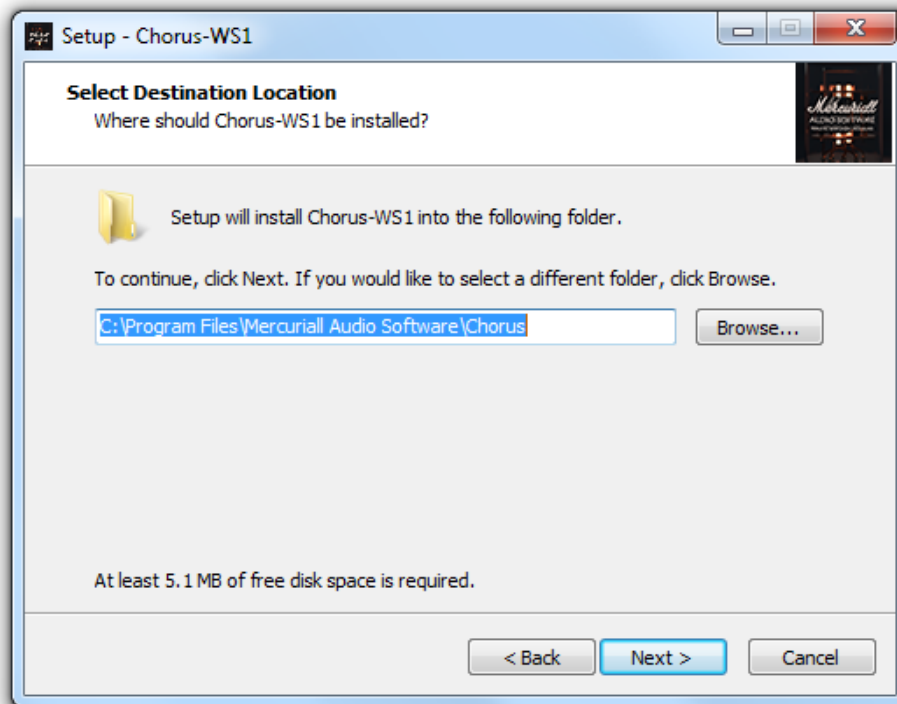
# Plugin installation steps on PC:



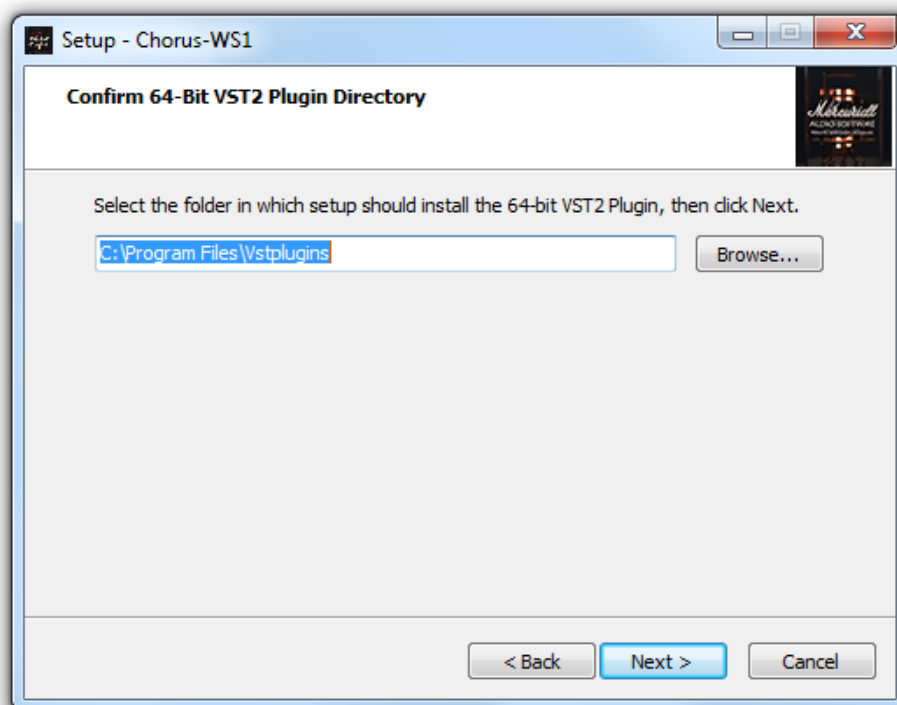
1 Click Next to continue installation;



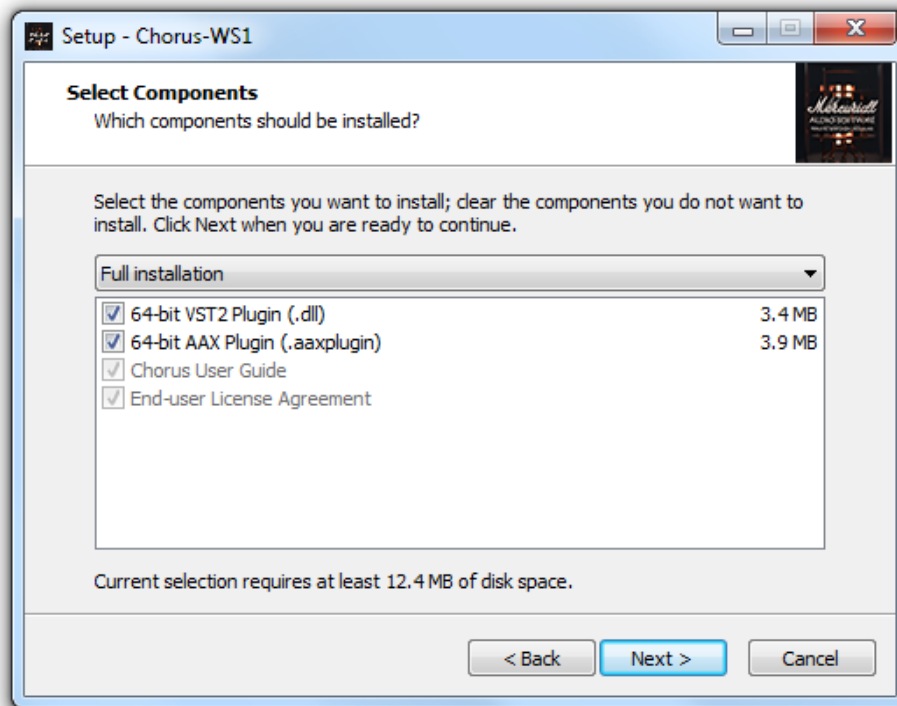
2 Accept License agreement to continue;



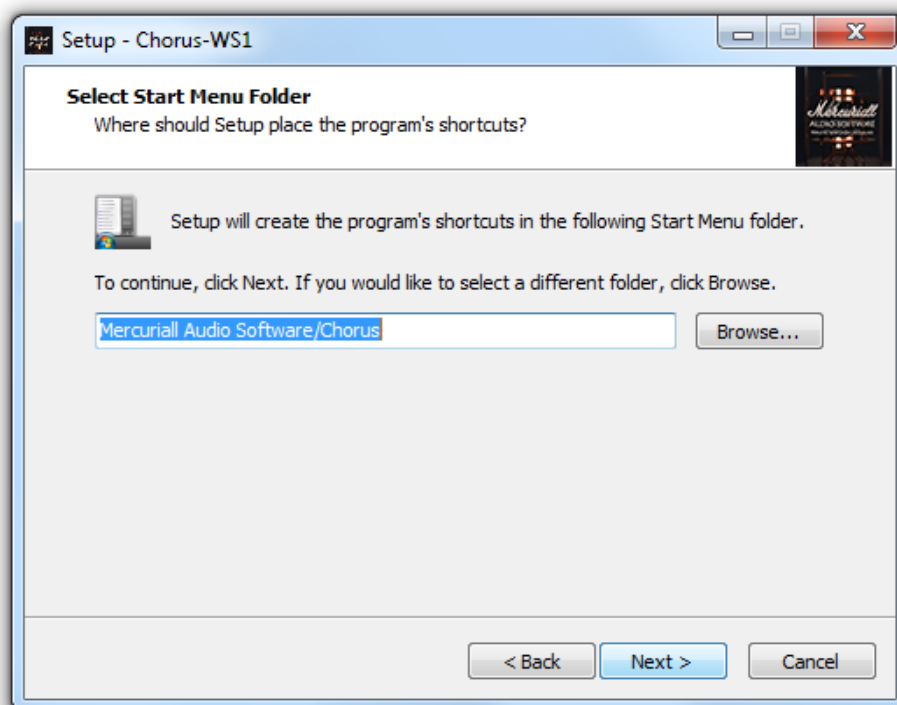
3 Select installation destination;



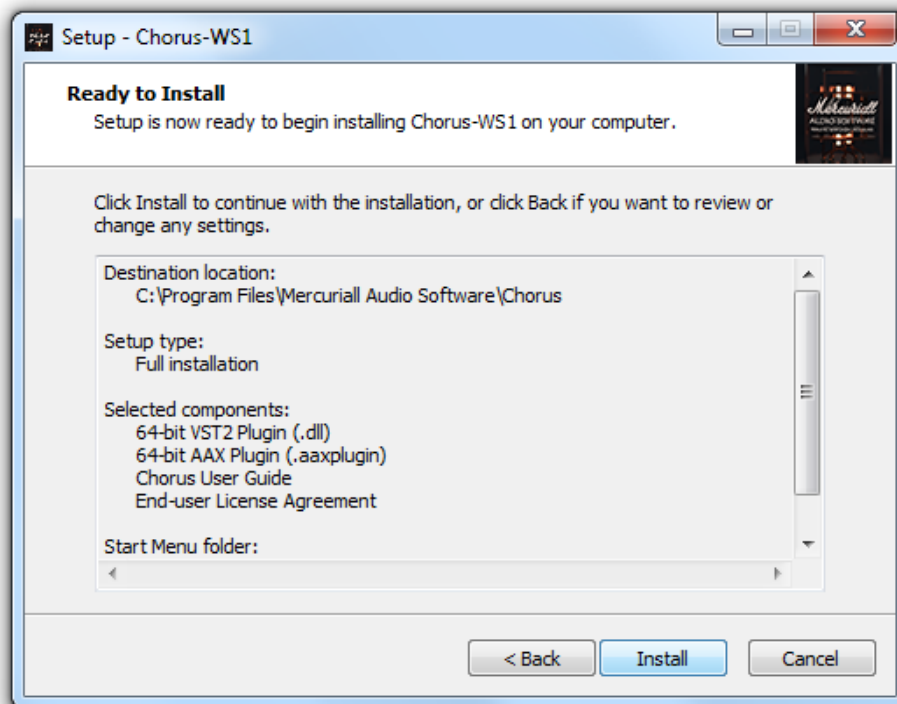
4 Select VST 64 bit folder;



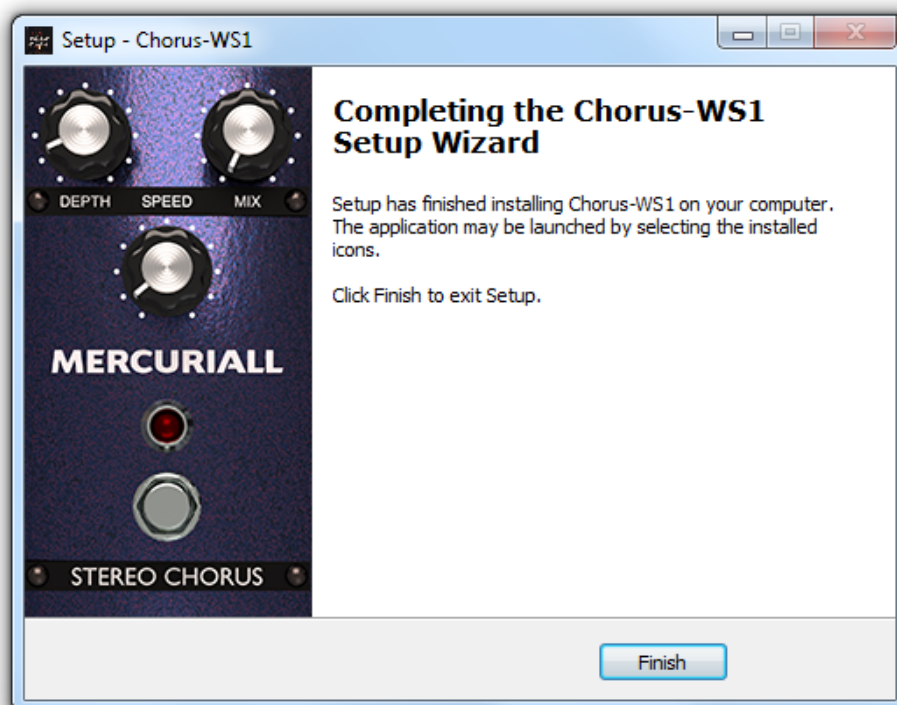
5 Select the components you want to install;



6 Select destination for program shortcuts;

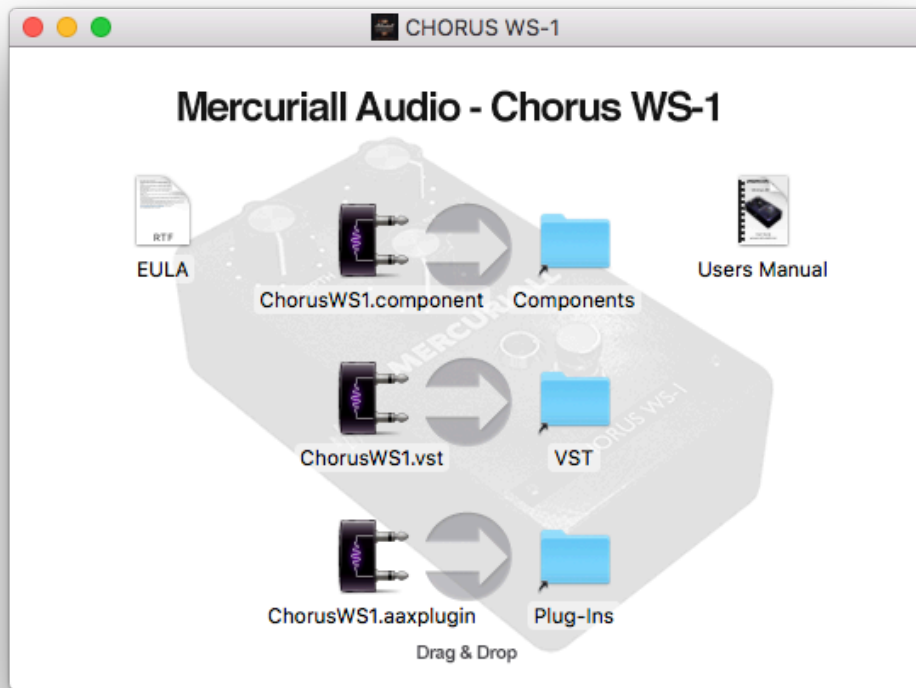


7 Process Install to start the installation;



8 Mercuriall Chorus WS-1 is installed.

# Plugin installation MAC:



Open the DMG image and drag the required plugin to corresponding directory.





## Controls:

- STEREO - stereo mode switch activates separate processing of each channel. It works only on a stereo track
- Depth - controls the amount of pitch modulation
- Speed - controls the speed of pitch modulation
- Mix - controls the mix of unprocessed and processed signals at the output